



FOUNDATION PURPOSE

To advance the vision and mission of Sky Lakes through philanthropy. Since 1985, The Sky Lakes Foundation has been raising, managing and distributing funds to benefit our patients and our community.

MISSION & VISION

Inspiring human potential through better health. Sky Lakes will be a catalyst for positive change, creating a vibrant and thriving community committed to transforming the health and well-being of current and future generations.

FUNDRAISING PRIORITIES



HEALTH CAREER
WORKFORCE
DEVELOPMENT



NEW CANCER
TREATMENT
CENTER



EXPAND ACCESS
TO CARE THROUGH
MOBILE HEALTH



SCHOLARSHIPS



COMMUNITY
INFRASTRUCTURE



PEDIATRIC CARE
& KLAMATH-LAKE
CARES



2024 HIGHLIGHTS

- \$735,000 raised for pediatric care.
- Moore Park Playground installed. Raised \$1,400,000 for project over 3 years.
- \$77,000 raised for Klamath-Lake CARES.
- \$21,000 raised for the family birthing center through the annual golf tournament.
- Awarded \$62,500 worth of community scholarships.
- Secured \$300,000 in grant funding to support Workforce Development.

CONTENTS

4	From The CEO	16	Patient Assistance Fund
5	Transformation 2030	17	Employee Help Fund
6	From The Foundation	18	Scholarships
7	Philanthropic Priorities	19	Grant Funding
8	Financial	20	Healthy Klamath: Alleyway Activation
9	Designated Funds	21	Healthy Klamath: Moore Park Playground
10	Cancer Treatment Center	22	Sky Lakes Foundation Golf Tournament
11	Renewal Suite & Hugh Currin House	23	Giving
12	Maternal Child Health	24	Foundation Board Of Directors
13	Wellness Center	25	Advisory Committees
14	Klamath-Lake CARES	26	Donors



FROM THE CEO



Welcome to the Sky Lakes Foundation Annual Report! As you read this report and learn more about all that has taken place over the past year, I want to begin by thanking you for your continued support and dedication serving our community. Each year is filled with new challenges and the ever present need to adapt and change. Through it all, you, our donors, have faithfully served our community, joining us as we work tirelessly to impact the health and wellbeing of those we are called to serve. THANK YOU!


Sky Lakes’ vision is to be a catalyst for positive change, creating a vibrant and thriving community committed to transforming the health and well-

being of current future generations. This exciting vision calls us to transform how we care for our and engage with each other to impact our community. I want to invite you to step out with us and engage in the exciting opportunity to go beyond our many challenges and to reach higher than we thought possible in our commitment to transform our community.

This bold new vision rests on Sky Lakes’ solid foundation and legacy of impact that your generosity and support made possible. As we look with anticipation to the possibilities of our future, I am excited to re-engage with you as we work together to transform the health and wellbeing of current and future generations.

Your gifts and support, no matter the size, will allow us to impact our community and achieve much more than we thought possible. As always, there will be many challenges, but together we can make a difference and overcome whatever comes our way.

Thank you again for your dedication and commitment to serving our community. Almost 3 years have passed since I first came to Klamath Falls and my commitment and dedication to this community has only grown stronger. I am inspired every day by the many ways we serve and impact the people of the Klamath Basin, and I could not be more excited about the future and the transformational impact we can achieve together.

Sincerely,

David Cauble
President & CEO



TRANSFORMATION 2030- OUR TRANSFORMATIVE FRAMEWORK

STRATEGIC AREAS OF FOCUS

The six strategic areas of focus have been deliberately designed to create a comprehensive framework, clearly outlining where we must focus our efforts to drive meaningful impact. Each strategic focus area is vital and cannot be fully realized without the collective support and alignment of all the other focus areas.

PRIMARY CARE

We will form a highly connected, engaged, and supported team of primary care providers committed to making a positive impact on the health and well-being of our community.

SPECIALTY CARE

We will create a network of providers called to serve in a rural area and dedicated to caring for the specialty needs of our community.

STEWARDSHIP

We will invest in positive change and the transformation of the health and wellbeing of the Klamath Basin through the innovative and wise utilization of our resources.

CULTURE

We will be known as a health system that lives by its values, that cares about our community and each other and is committed to the belief that we can positively impact the lives of the people we serve.

QUALITY & PATIENT EXPERIENCE

We will elevate the standard of care by prioritizing quality and patient experience, ensuring every patient receives compassionate, personalized, and timely care.

COMMUNITY

We will partner with the people we serve, actively engaging in the creation of a thriving community that inspires all individuals to realize their potential.



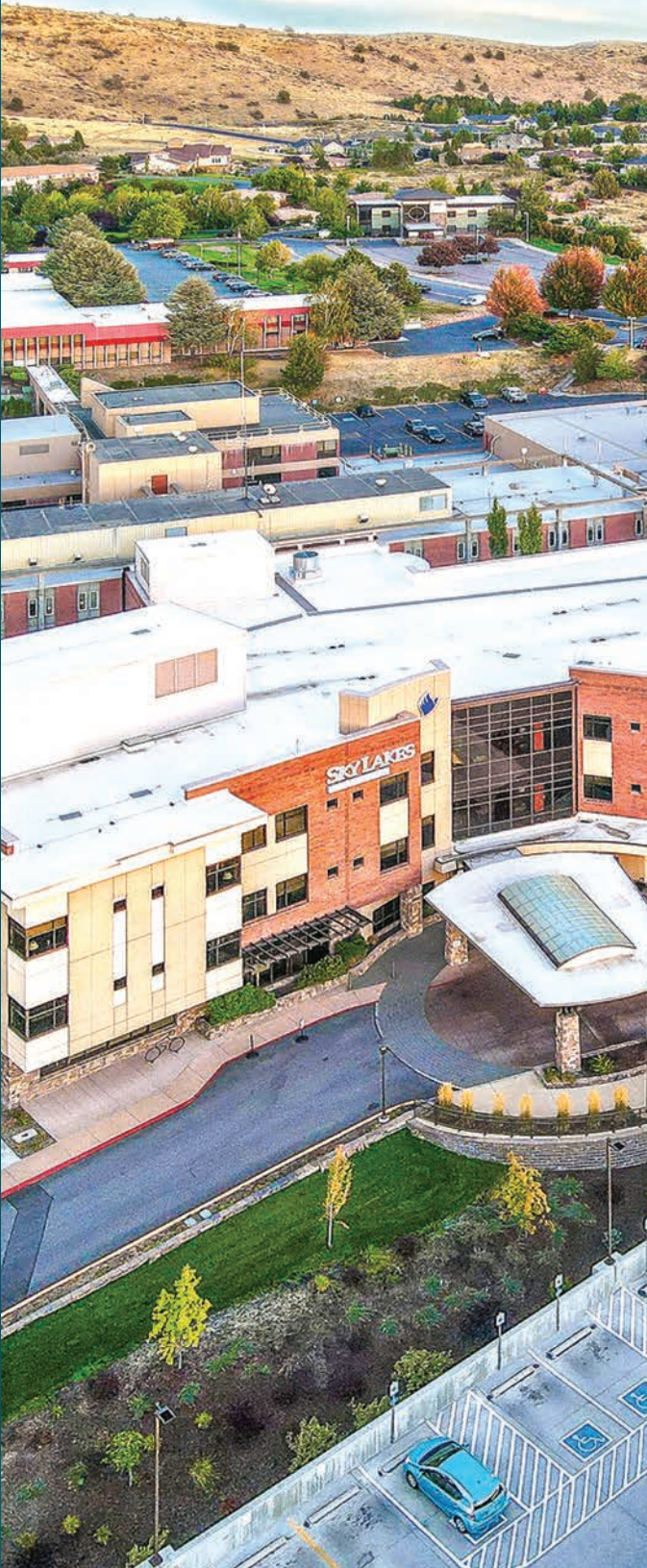
FROM THE FOUNDATION

GOALS FOR 2025

- 1
- Enhancing Visibility, Awareness & Engagement**
The Foundation is enhancing marketing materials, website content, and will begin tours to engage stakeholders. We will be hosting new community events and launching targeted campaigns.
- 2
- Driving Philanthropy & Financial Growth**
Our goal is to diversify giving programs, increase donor cultivation and stewardship, initiate new fundraising events, and secure grant funding for identified high-impact projects.
- 3
- Strengthening Community Support**
We are actively supporting community-led development initiatives, expanding scholarship programs, and continuing community benefit funding awards that align with our mission.

2024 WAS A MILESTONE YEAR FOR THE SKY LAKES FOUNDATION

We worked to advance the mission and vision of Sky Lakes Medical Center through philanthropy. We are humbled by the generosity and support our community has provided us this year. Together, we have achieved great progress in supporting our community, as outlined in this annual report. We hope that as you explore the 2024 annual report, you feel the impact your contributions and support have had within our service area. As we look to the future, we remain committed to building on these successes. With the continued support of our donors, volunteers, and partners, we are confident that we can achieve even greater milestones in the years to come. Together, we are working to create a vibrant and thriving community.



PHILANTHROPIC PRIORITIES

CANCER TREATMENT CENTER

Our Sky Lakes Cancer Treatment program has expanded, and we have outgrown our current facility. To address this, we're launching an initiative to build a new Cancer Treatment Center, including more space and new medical equipment. This project highlights our focus on patient-centered care and a healing environment.

CAPITAL NEED: \$46,000,000

WORKFORCE DEVELOPMENT

Sky Lakes workforce development programs are designed to bridge the gap between education and employment in healthcare, creating a pipeline of skilled professionals ready to serve our region. By partnering with local high schools, colleges, and industry leaders, we offer programs that provide students with hands-on experience and essential skills.

ANNUAL NEED: \$1,000,000

MOBILE HEALTH

Sky Lakes aims to offer primary care services to community members who lack access or the ability to receive care in traditional hospital and clinic settings. We are working to serve those living more than 20 miles from town by introducing a mobile health clinic, in turn reducing healthcare disparities offering vital services to all.

ANNUAL NEED: \$275,000

PEDIATRIC CARE

Through Klamath-Lake CARES and the Sky Lakes Family Birthing Center, we are committed to providing quality services to the children of our community. Our programs are designed to address the diverse needs of our community, from prenatal care to pediatric services, and we continuously strive to enhance our offerings through community feedback and collaboration.

ANNUAL NEED: \$180,000

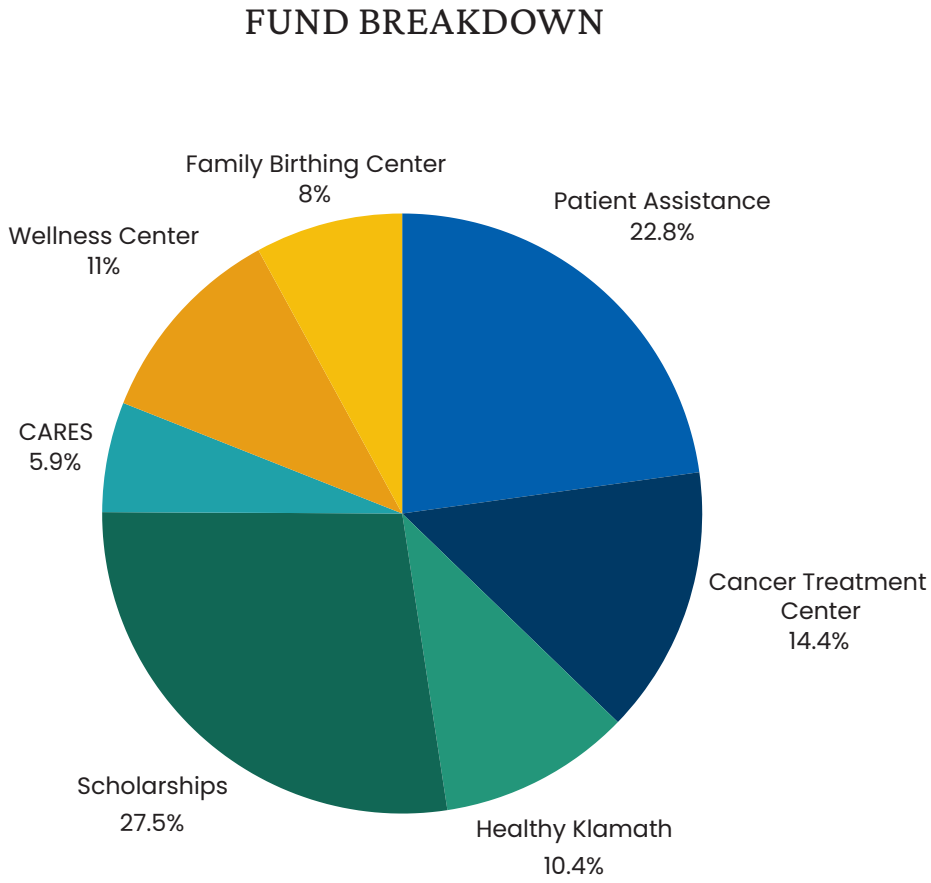
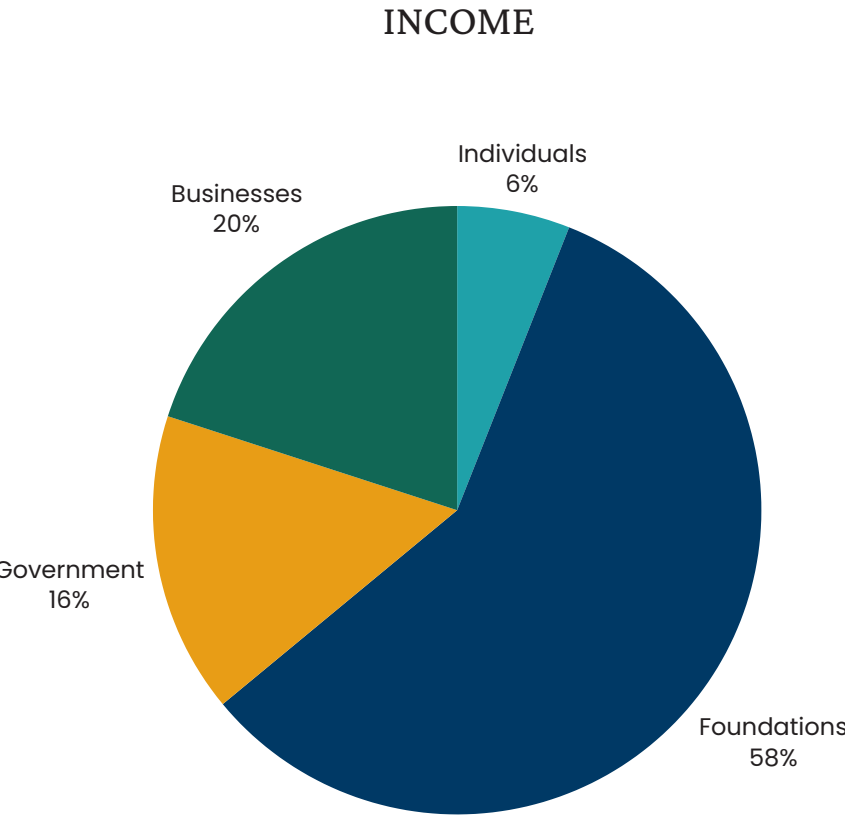


EVERY dollar donated goes directly to the initiatives YOU choose. Sky Lakes Foundation pays all administrative expenses of the Foundation, ensuring your gifts have maximum and lasting impact to benefit patients and the community.



FINANCIAL

Private foundations accounted for more than half of our assets this year. Partnerships with other mission-driven organizations are crucial for our progress, and we truly appreciate the positive impact they have had. Additionally, 26% of our funding has come from generous contributions made by community members and businesses that have supported each of our funds this year.



DESIGNATED FUNDS

Each fund supports our mission and our patients in various ways. The Cancer Fund aids patients, purchases supplies for the Cancer Treatment Center, and provides support group materials. CARES of Klamath and Lake Counties, offers evaluations of suspected abuse cases. The Patient Assistance Fund includes the purchase of clothing, gas, food, and rent support identified by Sky Lakes staff. The Maternal Child Health fund provides car seats for new families and comfort materials for those experiencing loss, as well as equipment for the Family Birth Center. Donations to the Wellness Program help participants afford the Wellness Center Services, empowering them to improve their quality of life.



CANCER TREATMENT CENTER

Sky Lakes Cancer Treatment Center provides comprehensive care with skill and compassion. Our care team focuses on patients' specific needs to provide individualized care one person at a time. The passion of our clinicians, nurses, and radiation therapists can be seen in their dedication to improve the quality of care and to deliver the most up-to-date treatments available. This year our navigation team received ACS LION certification through the American Cancer Society Leadership in Oncology Navigation and deliver essential support to individuals, caregivers, and families experiencing cancer.



We reinvigorated the tradition of ringing the bell by creating a Celebration Bell Wall in our main lobby, and we have enjoyed celebrating with many patients as they ring the bell for reaching a milestone in treatment or completing their cancer journey.



RENEWAL SUITE & HUGH CURRIN HOUSE

Our Renewal Suite helps patients manage the appearance-related side effects of cancer treatment to regain confidence in their self-image. We updated our display cases to display a variety of wigs and scarves to simplify the process of finding the perfect one to fit each personality. This year we had the pleasure of helping 26 patients. All items are provided through Sky Lakes Foundation at no cost to the patient.



The Hugh Currin House provides a comfortable place for patients and families to stay while undergoing treatment. It is conveniently located across the street and patients can easily walk over to the Cancer Treatment Center. Hugh Currin has two identical suites that have a communal living space with a full kitchen. Each suite has six individual rooms with two double beds and a private bathroom. There are two RV pads with hookups for patients who prefer the privacy of their own RV. In the last 12 months, the Hugh Currin House hosted 22 patients and families with approximately 520 nightly stays. Patients and families can stay free of charge; a nominal fee of \$10 is suggested for those who can afford it. This year Sky Lakes Foundation purchased new couches and recliners for the communal living spaces. This was a fresh addition to an already comfortable space made possible through the generosity of our community donors. We are so grateful for the support we receive from our community members.



Comment from a patient about Hugh Currin House: *“Thank you so much for providing the Hugh Currin House as a place to stay. The accommodations are extremely comfortable. It is a relief to know that we don’t have to drive every day for my radiation treatments.”*

MATERNAL CHILD HEALTH

Community Presence and Partnerships:

Last year the FBC partnered with the Klamath Early Reading program. They provided cardboard covered children’s books in English and Spanish, and the FBC made sure every infant had one.

At the Sky Lakes Wellness Center, we hold a monthly lactation support group (Nurture Nook), free to the community.

Also free to the community, is a comprehensive six-week Childbirth Class. This class is taught by our Birth Center nurses. They reviewed the changes a new mother’s body goes through, what to expect while delivering, available resources such as physical therapy and lactation services.

We partner with local pediatricians (Dr. Graham, Dr. Cherry, and the providers at Sanford Pediatric Clinic, plus those at Cascade East) to care for children in our community. These children (0-17 yrs.) are cared for in our six bed Pediatric unit. We partner with OHSU who provides phone support to manage medically complex children.



To Enhance Bedside Care at the Family Birthing Center:

Patient-controlled epidurals were implemented, allowing women to self-administer pain relief while reducing medication usage. Monitoring devices (End Tidal monitors) were acquired to detect CO2 retention and prevent over-sedation.

VICTORIA, a maternity training manikin, is used for team training in deliveries and infant CPR, preparing staff for emergencies.

The center is a Gold Level Accredited Infant Sleep Center, educating new parents on safe sleep practices and providing sleep sacks to prevent SIDS, along with infant porta-cribs for those in need.

The Foundation has assisted 10 families with car seats over the past year for safe discharge.

WELLNESS CENTER

At the Wellness Center, we know a strong community is a healthy community. We have expanded our outreach this past year through the addition of new services, offerings, and community partnerships to build a strong foundation for health across the Klamath Basin.



Group Medical Visits:

The Wellness Center has expanded its Group Medical Visits to cover more topics and serve more patients. These visits allow patients with similar health concerns to attend appointments together, discussing disease facts, treatments, and management strategies. Led by providers like Dr. Stewart Decker and others, topics include High Blood Pressure, Anxiety, Cholesterol, Diabetes, and more. Benefits of Group Medical Visits include camaraderie, shared experiences, and a supportive environment, often covered by insurance.



School Partnerships:

During the 2023–2024 school year, the Wellness Center hosted multiple fieldtrips for Health Occupations students from Mazama and Henley to experience a "taste" of the Wellness Center. Students have a hands-on opportunity to see what a career might look like in a preventive care setting, through cooking activities, mindfulness exercises, and a "talk with a doc." In addition, our team partnered with Klamath Grown and Fresh Green Organics to bring local produce to Pelican and Conger elementary schools for Try Day Friday.



Klamath Cook-Off:

Initially hosted as an internal event for Sky Lakes employees, Klamath Cook-Off expanded this year to host community partner challenges. In October 2023, we hosted a First Responders Competition, and in December 2023, we hosted a Kingsley Airbase vs. Klamath County Fire District 1 Competition. Inspired by Chopped, four teams have one hour to prepare a dish made from five mystery ingredients. Planned, organized, and hosted by our dietitian, Jennifer Newton, these fun events can also be pretty competitive. (Although, our most competitive slots to fill are our judges' seats, which are always popular and highly sought after!)

KLAMATH-LAKE CARES

A Message from Samantha Fenner, Clinical Manager:

As someone who has dedicated 24 years to the field of child abuse intervention and prevention, I feel honored to serve as part of Klamath-Lake CARES. For the past 18 years, I've been a forensic interviewer, and in 2022, I had the privilege of stepping into the role of clinical manager. Child abuse is a challenging and deeply impactful issue in our community. It's a topic that's hard to face, but I believe that confronting it together, with courage and commitment, makes a difference in the lives of countless children and families.

The work we do at CARES is deeply meaningful. We work closely with children who need a safe place to be heard and seen, and with families seeking help and hope during difficult times. The strength of our work comes from the partnerships we have in this community, all of us united by a common goal: to protect and nurture our children. I'm filled with gratitude to have a career that allows me to make such a meaningful impact, and I am equally grateful for the skilled and dedicated team I get to work alongside every day.

The pride I have in our CARES staff cannot be overstated. Our team includes medical providers, forensic interviewers, intake specialists, and advocates who work tirelessly to provide a rapid response to children in need. Their commitment is evident in how they'll come to CARES in the middle of the night if necessary, and in the exceptionally low turnover in our department, which speaks to the fact that this work is more than a job—it's a calling. I am honored to be part of this shared calling.



Samantha Fenner, Klamath-Lake CARES Clinical Manager

The support we receive from Sky Lakes Medical Center and its board has been essential, allowing us to advance our mission and services. We are grateful for the essential contributions of the Foundation, Risk Management, Accounting, Information Systems, Human Resources, the Emergency Department, Volunteers, Engineering, Billing, and so many others who make our work possible. Every department has played a role in CARES' success, underscoring the importance of our collective mission.

As we look to the future, I am filled with hope. The journey is not easy, but with the dedication of our team, the support of Sky Lakes, and the strength of our community partnerships, we are making a real difference. Thank you for standing with us in this vital work. Together, we are building a safer, stronger community for our children.

KLAMATH-LAKE CARES



2024 Klamath County Symposium:

The 2024 Klamath County Symposium at Oregon Tech focused on trauma and resilience, attracting over 500 attendees, led by expert Dr. Chris Wilson. His sessions included: Basics of Threat, Trauma, and the Brain Long-Term Impacts: Understanding the ACE Study Domestic Violence Dynamics Working with Survivors and Building Resilience. The diverse audience included healthcare workers, educators, and law enforcement, all committed to trauma-informed practices. Organized by the Klamath County Child Abuse Prevention Coalition, the symposium is crucial for raising awareness and collaboration in addressing trauma's impact, ultimately supporting children and families in the community.



Klamath-Lake CARES Team

Child Abuse Prevention Month 2024:

April is Child Abuse Prevention Month in Klamath County, highlighting the vital role of families and communities in preventing abuse. The Klamath County Child Abuse Prevention Coalition organized events, including a public proclamation from local authorities and the annual Day of Hope event to raise awareness. Training on child maltreatment prevention was also provided. Throughout the month, a banner was displayed, and pinwheel lapel pins were distributed as symbols of prevention. A campaign with Goodwill raised \$2,300 for Klamath-Lake CARES. These efforts demonstrate Klamath County's commitment to child protection and family support.

2024 MDT Training:

The 2024 Klamath and Lake County Training Day, hosted by Klamath-Lake CARES, focused on child death investigations, attracting nearly 200 participants. Alison Martin, a Senior Child Abuse Prosecutor, led the training alongside Klamath County officials. The event included members of Multidisciplinary Teams (MDTs) from various sectors, emphasizing coordinated investigations to protect vulnerable children and ensure justice. This training equipped local professionals with essential skills for handling sensitive child maltreatment cases.

PATIENT ASSISTANCE FUND

The Patient Assistance Fund is used to provide assistance to patients for the purchase of clothing, gasoline, food, rent or other needs identified by Sky Lakes staff.

Patient Stories:

An elderly patient faced the threat of homelessness after receiving a diagnosis and accumulating medical expenses. Fortunately, with the support of the community, DHS-APD, and Patient Assistance, Sky Lakes successfully facilitated his placement in senior living accommodations.

In another case, a patient who lost everything in a house fire in Bonanza received aid through Patient Assistance funds, which enabled her and her husband to maintain housing while she underwent treatment.

Additionally, a patient who had devoted a decade to her employer encountered obstacles when her workplace denied accommodations for her treatment schedule. Unfortunately, this led to her termination. However, Patient Assistance funds provided crucial support, allowing her to manage her overdue utility bills during this challenging period.



Impact:

Provided over \$117,000 to patients in Fiscal year '24.

Purchased 100 Fuel vouchers for patients traveling from remote areas.



EMPLOYEE HELP FUND

The Sky Lakes Employee Help Fund was created to support employees facing unexpected challenges. We rely on donations from compassionate employees through payroll deductions to sustain the fund. Covered expenses may include: rent, utilities, vehicle repairs, dental, childcare, funeral expenses and other emergent needs.

In 2024:

Provided \$33,000 in assistance to 81 employees.

132 Employees enrolled in Payroll deductions.



Impact:

- Assisted an employee with cremation expenses after an unexpected death in the family.
- Settled the payment for a large water bill caused by an unforeseen pipe leak.
- Paid the license renewal fees for a full-time employee who is also a nursing student experiencing financial difficulties.

SCHOLARSHIPS

Sky Lakes Medical Center Foundation offers scholarships to college students. The scholarships are made possible by the generosity of Klamath-area families and organizations.

Elks Valerie Murphy:

Accepted and enrolled full-time in any school for a health and/or science field. First consideration will be given to students serving in the military.
Awarded in 2024: \$10,000

Klamath Falls Elks:

Priority to those attending/accepted into OHSU Nursing program. Priority to graduates from Klamath Basin High Schools, public/private.
Awarded in 2024: \$32,000



Stearns:

Enrolled in any accredited school of nursing. Priority to graduates from Klamath Basin High Schools, public/private.
Awarded in 2024: \$5,000

Holman:

OIT competitive student athletes only. Enrolled/accepted in any health occupations program at OIT.
Awarded in 2024: \$5,000

James Bocchi:

Non first-year college students attending and/or accepted into a nursing program at KCC or OHSU/OIT. Graduates from Klamath Basin High Schools, public or private.
Awarded in 2024: \$5,000

Scholarships open each November on our website:
skylakes.org/foundation/scholarships

SCHOLARSHIP SPOTLIGHT

Student: Jordan Landers / **School:** OHSU **Major:** Nursing
Scholarship: Elks Boyers Nurses Scholarship / **Amount Awarded:** \$3,000

“My name is Jordan Landers and I’m a 21 year old from Medford, Oregon. I’m currently a junior in the OHSU nursing program located in Klamath Falls. As a first generation college student receiving limited financial support from my family, receiving the Elks Boyers Nursing Scholarship was a major help and stress relief. I moved to Klamath falls three years ago to attend school at Oregon Tech and have been working part time jobs ever since to help with paying for school. I am continuing to work two part time jobs during school this year, however this scholarship allowed me to lessen my hours and spend more time focusing on schoolwork. It’s also allowed me to purchase a better stethoscope to enhance my clinical experiences in the hospital. Overall, this scholarship offered amazing assistance in my education to become a nurse.”

GRANT FUNDING

Applying for grants is an opportunity to share our story with organizations who believe in our mission. Grants help our nonprofit grow sustainably and reach more people who need our services.

FINANCIAL

Private foundations accounted for more than half of our assets this year. Partnerships with other mission-driven organizations are crucial for our progress, and we truly appreciate the positive impact they have had. Additionally, 26% of our funding has come from generous contributions made by community members and businesses that have supported each of our funds this year.

DESIGNATED FUNDS

Each fund supports our mission and our patients in various ways. The Cancer Fund aids patients, purchases supplies for the Cancer Treatment Center, and funds support group materials. CARES of Klamath and Lake Counties, offers evaluations of suspected abuse cases. The Patient Assistance Fund includes the purchase of clothing, gas, food, and rent support identified by Sky Lakes staff. The Maternal Child Health fund provides car seats for new families and comfort materials for those experiencing loss, as well as equipment for the Family Birth Center. Donations to the Wellness Program help participants afford the Wellness Center Services, empowering them to improve their quality of life.

GRANT SPOTLIGHT: NUTRITION OREGON CAMPAIGN

The Nutrition Oregon Campaign is a statewide network of connected communities and like-minded organizations challenging the systemic factors that contribute to chronic disease risk. Through funding support from the OHSU Moore Institute, Healthy Klamath, in partnership with the Nutrition Oregon Campaign, launched a comprehensive curriculum for healthcare professionals to educate expecting families in best practice for nutrition in pregnancy and post-partum. Healthy Klamath is committed to assisting our community in reducing the percentage of low-birth weight babies to less than 5% by 2030.

KLAMATH-LAKE CARES

Upgrade equipment & expand services.
\$339,117 in Grant Funding

HEALTHY KLAMATH

- Tobacco Prevention
 - Moore Park Playground
 - Nutrition Oregon Campaign
 - Community Parks, Trails & Art Projects
- \$528,600 in Grant Funding**

WELLNESS CENTER

Worked diligently to address Social Determinants of Health.
\$61,803 in Grant Funding



HEALTHY KLAMATH: ALLEYWAY ACTIVATION

Healthy Klamath has now completed 3 phases of the Alleyway Activation Project. A Project targeting beautification of our downtown corridor bringing art into the streets of Klamath. The Alleyway Activation Project originally started as an effort to involve our senior center in efforts downtown by inviting them to paint tiles that were apart of a larger mural equaling 4x8'. In our second phase we invited the Cancer Treatment Center patients and staff to participate in tile painting that would be a second mosaic. For phase three we partnered with the Virtuosa Society to feature prominent women in the history of Klamath.

The women featured were influential in the community and had a big impact on where we are today. Overall this project aimed to bring history into the streets of Klamath engaging travelers, youth, and community members.

Phase three does not conclude the art installations but is a catalyst for phase four coming in 2025.

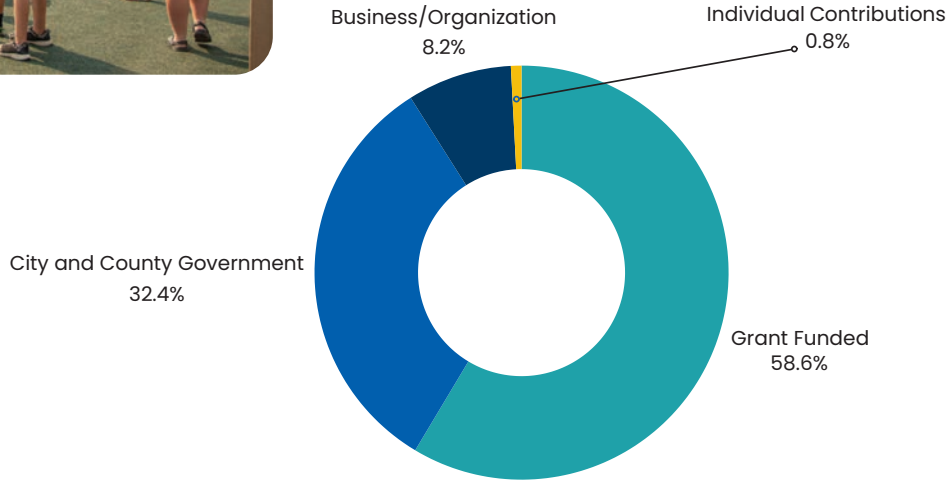


Winema Riddle, painted by Natalia Loveness
Janice Lee York Romary, painted by Natalie Norris
Martha Ann Dow, painted by Ashley Spivey
Marie Norris, painted by Ka'ila Farrell-Smith
Maud Baldwin, painted by Melanie Corradi
Nancy Wendt, Jean Pinniger and Joan Staunton, painted by Kelly Armijo

HEALTHY KLAMATH: MOORE PARK PLAYGROUND

Since 2019, Healthy Klamath, Sky Lakes Medical Center, the City of Klamath Falls, and community partners have worked together to bring this playground to life. We started by consulting local schools to gather children's input on their ideal playground, worked with community leaders, and this feedback was used to guide the design. With the design in hand, we raised funds for two years. This project was supported by donations from 24 local businesses, 67 individuals, and five grants, as well as the hard work of 250 community volunteers who helped build the playground in August and October of 2023.

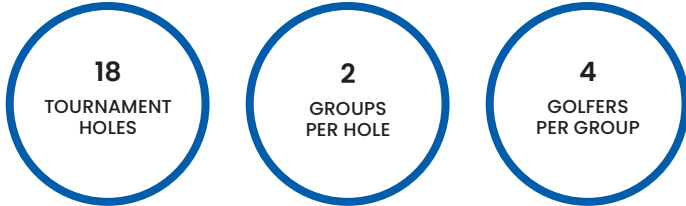
The finished 18,000 square foot, ADA playground features elements that reflect our community's history and culture. The playground highlights include the Mt. McLoughlin climbing wall, Crater Lake-themed surfacing, a Klamath tule hut, a zip-line, a spider trampoline, and an Eagle's Landing—features that offer fun for children of all ages. The playground opened to the public on July 9th, 2024.



SKY LAKES FOUNDATION GOLF TOURNAMENT

The challenging golf course at Running Y Resort was designed by Arnold Palmer and has been ranked as one of the top 100 public courses in the country as well as one of Oregon’s best!

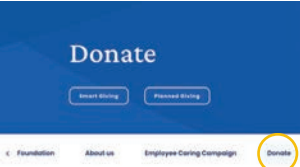
- 104 Registered Players
- 7 Gold and Platinum Sponsors
- \$33,815 Raised for our community
- \$20,000 Designated to the Family Birthing Center



GIVING

If you are interested in making a charitable donation to the Sky Lakes Foundation, here are some options for ways you can contribute.

FOR ALL DONORS



- Sky Lakes Website:**
- Cash gifts to your chosen designation
 - www.skylakes.org/donate



- A new, FREE tool for our benefactors:**
- FreeWill Smart Giving:**
- Stock • IRA • DAF
- FreeWill Planned Giving:**
- Will/Estate Planning • Monetary Bequests

Thank you for your contribution!
Your donation is tax-deductible to the fullest extent of the law.

FOR EMPLOYEES



- UKG:**
- For Employees of Sky Lakes Medical Center
 - For pre-tax employee payroll deduction
 - Donate to a designation of your choosing



FOUNDATION BOARD OF DIRECTORS

Supervised by a volunteer board of directors made up of community leaders, the foundation is committed to assisting Sky Lakes Medical Center in achieving its goal of reducing the impact of illness and injury and enhancing the well-being of the communities it supports.

Marty Ledgerwood, *Chair*

Tom Schiess, *Vice Chair*

David Cauble, *President & CEO*

Merritt Driscoll, *Foundation Director*

Amy Boivin

Chris Kandra

Holly Montjoy

Jennifer Scanlan

John Bell

Doug McInnis

Heidi Neel Biggs

Dr. Wendy Warren

Dr. Radu Moisa

Rod Wendt

Andrew Smith

Dr. Scott McCreadie

David Stork

ADVISORY COMMITTEES

Advisory committees, made up of dedicated community members, provide advice, share perspectives, and ensure public involvement for CARES and the Cancer Treatment Center.

CARES ADVISORY COMMITTEE

Marty Ledgerwood

Tom Schiess

Ursula Gailis

RaShell Carvalho

Ryan Phillips

Joy McInnis

Terry Kenfield

Kay Ortega

David Groff

Chloe Say

CTC ADVISORY COMMITTEE

The Cancer Advisory Committee is in the process of being re-established. Members of this board will participate in collaborative discussions, and contribute expertise to shape policies and programs that truly make a difference in the lives of those affected by cancer.

The first Cancer Advisory Meeting is scheduled for January 2025.

DONORS

\$1-\$499

Joe and Terry Alt
Sharon Badorek
Lynn Baumann
Donna Bellamy
Albert and Julia Bensie
Ed and Sheryl Beverly
David and Judith Bluhm
Shirley and Gerson Bonaparte
Cornelius Boshuizen
Uwe and Jerri Britsch
Dr. Michael J. Casey
Doug and Barbara Collier
Floys and Clo Cone
Klamath Cremations
Ray Davidson
Merritt Driscoll
Juliann Duffer
Melvin and Renee Ferguson
Joan Fifield
Dr. Jakob and Traci Fried
Gerald and Susan Freschi
Michael and Yvonne Gillette
Daniel Golden
Janet Hall
Maureen Hammers
Jean Hannigan
Sherry Johnson
Mary L. Jungers
Ken Kendall
Chris and Terry Kenfield
Ronnie Kennedy
Michael Kennett
Will and Cheryl Kenney
Klamath Basin Pickleball Association
Klamath Falls Police
Rodney and Dorothy Klein
Douglas Knitzinger

Mark and Lorraine Kochevar
Penny Lassett
Mark Makinson
Constance McCormack
David Misso
Jerry and Yvette Molatore
John and Ann Novak
James and Jean Pinniger
Patrick Price
Rhine Cross Group
James and Amy Rooks
Angela Rose
Charla Silverman
Elwood and Jill Sine
Meredith Smith
Mary Lou Stewart
Melvin Stewart
Savannah Vaughn
Joan and Jon Wayland
Kenneth and Virginia White
Larry Wilson
Lynn Wilson
Karen Wynne

\$500-\$999

Cardinal Flooring
Les Carmichael
Dennis Davenport
Eagle Ridge Highschool
Mountain Valley Gardens
Dena Haudenschild
Drew and Betsy Honzel
Jeld-Wen
Kersey Edgeworth Kersey
Andrew Koong
The Tent Company
Christie Wiles

\$1000+

American Cancer Society
Citizens for Safe Schools
Graham Family Foundation
Frank Winnie and Son
Glenn and Ursula Gailis
Hall Motor Company
Sandra Hardin
JanTerr Inc.
Lawrence and Maureen Jespersen
Chris and Susan Kandra
Klamath County
Klamath County Rotary Club
Klamath Falls Downtown Association
Anderson Dabrowski Architects LLC
Dick and Christine Ledgerwood
Friends of Klamath County Library
Keith Mingolello
Chris and Linda Moudry
Tina Patire
Windermere Real Estate
GoodWill
Jennifer Scanlan
Integral Youth Services
Soroptimist International
Morgan Stanley

2024 Estate Gifts

Norman Richardson
John Stilwell
Florence Ann Parker

*thank
you*



Philanthropists are people who promote human welfare through a gift or an act. The desire to help others in a very tangible way—to be true humanitarians—sustains Sky Lakes Medical Center, allowing it to weather economic storms and maintain the highest standards of medical care. Each year, hundreds of generous benefactors, many of them former patients grateful for the care they or a loved one received here, have made donations that enable us to continue our mission of health and compassion. We deeply appreciate all those who have contributed to The Sky Lakes Mission of Service to our community. We hope you, too, will choose to support us through tax-deductible contributions to the Sky Lakes Medical Center Foundation.



Sky Lakes Medical Center Foundation

2865 Daggett Ave.
Klamath Falls, OR 97601

foundation@skylakes.org

